



Seeing beyond

ZEISS Metrology Expert Tip



**Correct Check and Assembly
of ZEISS Extensions**

probes.zeiss.com

Regular Check of ZEISS Extensions

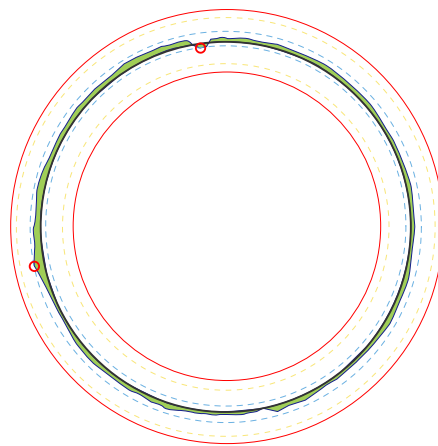
Stylus systems and therefore each individual component must be regarded as measuring equipment. This means that no accurate or reproducible measurement can be guaranteed if they are used improperly. This means that stylus systems must be checked for functionality after a collision or a fall. The easiest way to check this is with a roundness measurement on a calibrated measuring ring. With carbon fiber extensions, it is possible for individual fibers to be damaged, which may not be visible at first glance. This can only be checked by inspecting the ring. As extensions are a crucial component for the accuracy of the measurement, you should not take any risks.

Measurement on the ring – with error at one point on the extension

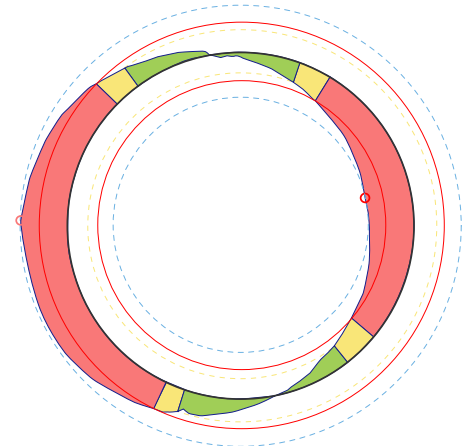
Legend

- Out of Tolerance
- Out of Warning
- Within Tolerance
- nominal value
- tolerances
- - - extreme circuits
- extreme points

Ideal shape



Incorrect shape

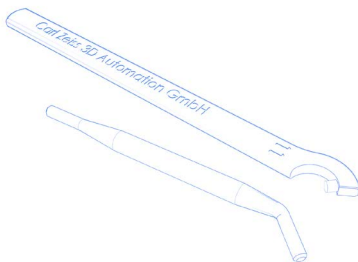


Assembly of ZEISS Extensions

The biggest mistake can be made during assembly if the extensions are tightened incorrectly. This is when a torque is applied to the carbon fiber element.

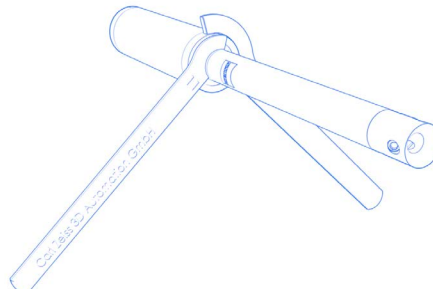
Correct tool:

Hook spanner or pin spanner



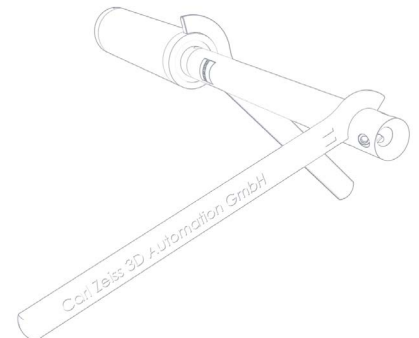
Correctly mounted:

Screw in hand-tight, tightening with hook spanner. Always apply force directly to the thread



Assembled incorrectly

Incorrect application of force can damage fiber of extension



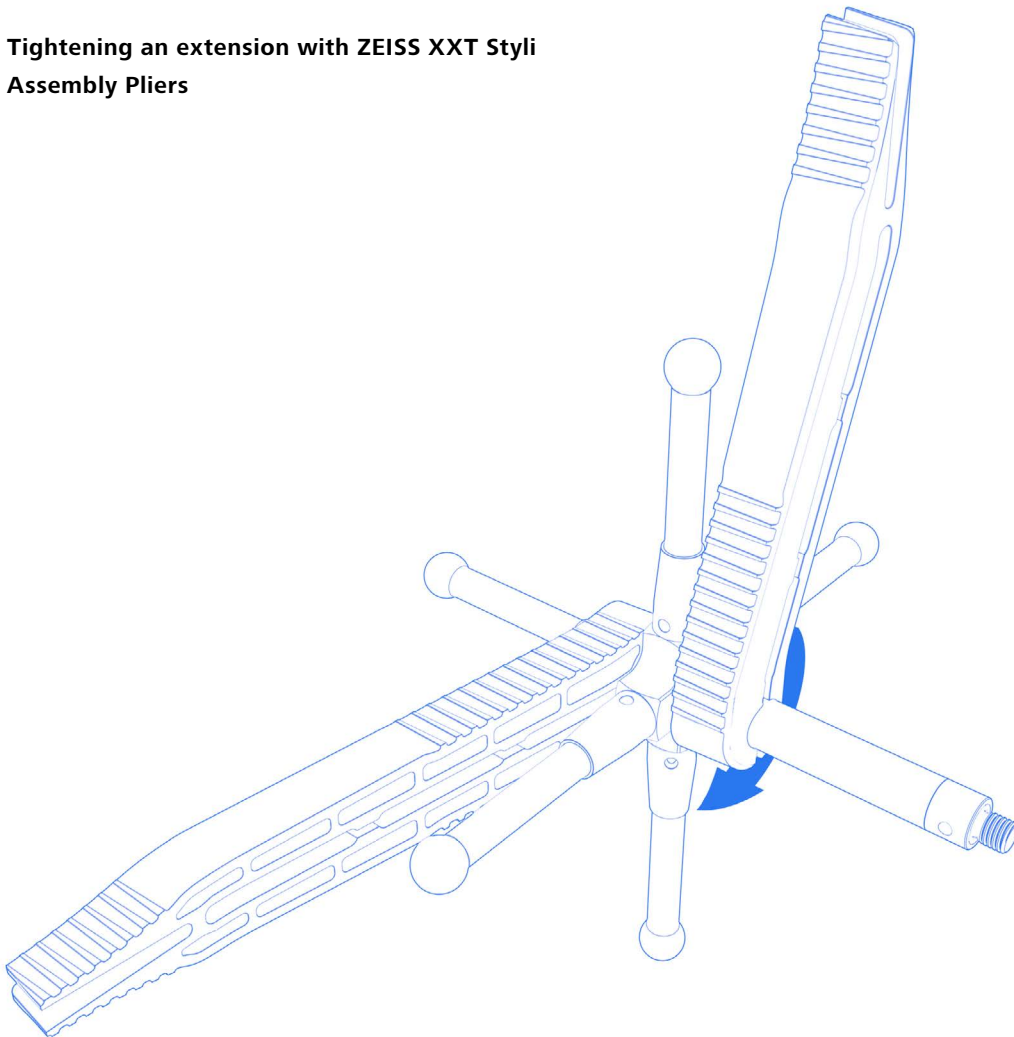
Correct Assembly of ZEISS XXT Extensions

With the ZEISS XXT Styli Assembly Pliers, you can hold and fix styli quickly and securely. Our designers have developed this practical tool especially for the ZEISS XXT Styli range and have incorporated three decisive advantages for you:

- Transmission of high tightening torques via two built-in steel pins
- Easy to open and operate with one hand
- Clamps onto the styli by itself



Tightening an extension with ZEISS XXT Styli Assembly Pliers



**ZEISS Original Accessories
are available in the
ZEISS Metrology Shop.**

Carl Zeiss

Industrielle Messtechnik GmbH

Carl Zeiss Straße 22

73446 Oberkochen / Germany

Email: accessories.metrology.de@zeiss.com

Internet: probes.zeiss.com

