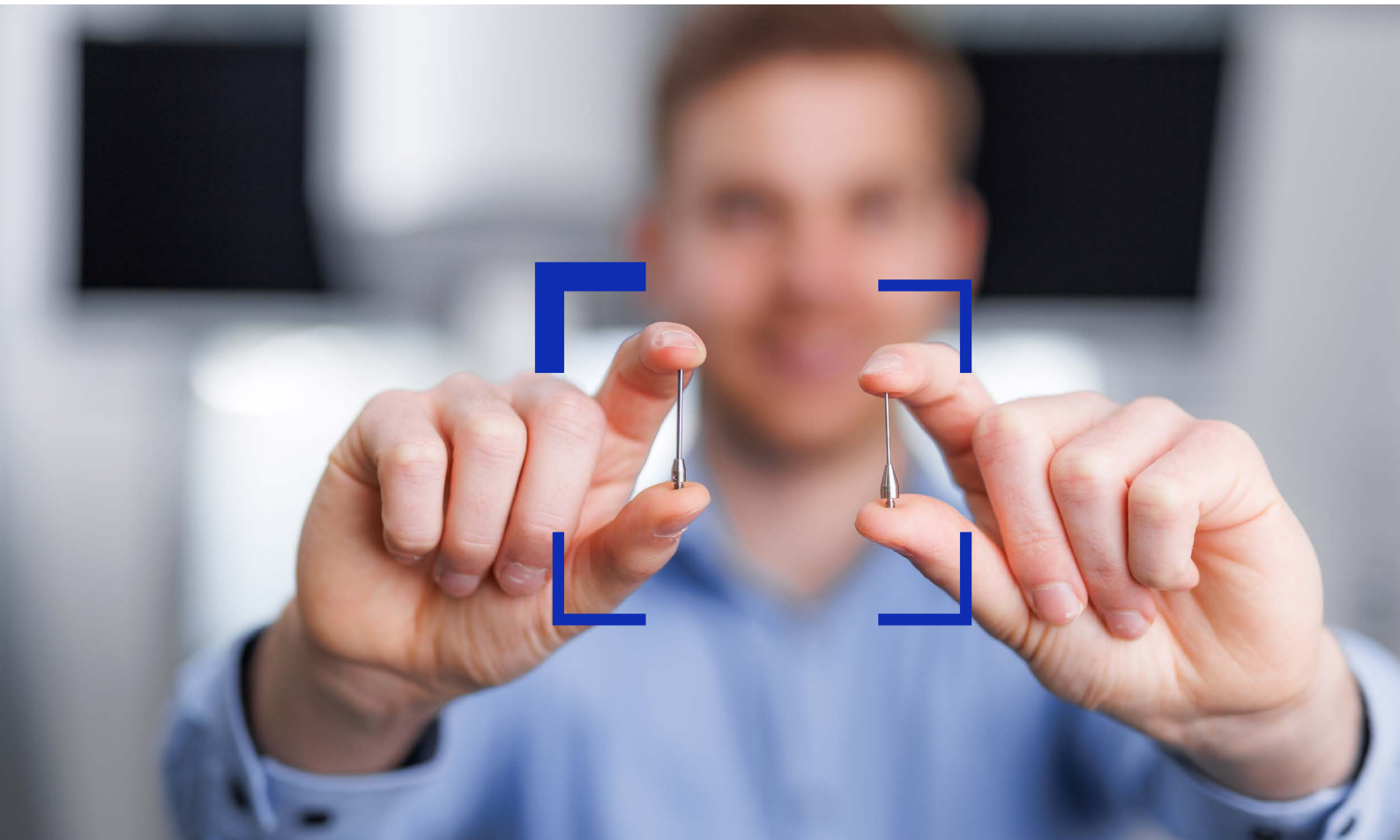




Seeing beyond

# **ZEISS Metrology Expert Tip**



**Difference Between the ZEISS M3 XXT Stylus  
and a M3 Stylus (Touch-Trigger)**

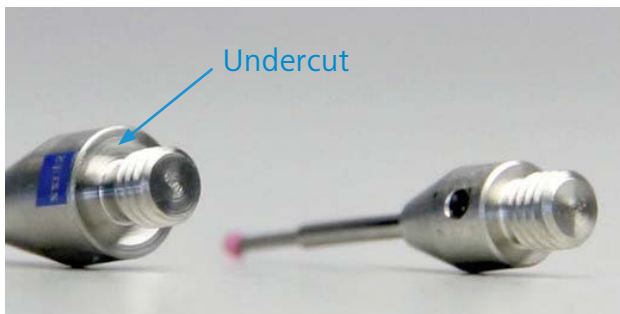
## Difference Between the ZEISS M3 XXT Stylus and a M3 Stylus (Touch-Trigger)

The adapter itself is an important component of the stylus and is the connection between the connection thread and the shaft. The adapter of the ZEISS M3 XXT stylus has a larger base body compared to a M3 stylus (touch-trigger), which increases the rigidity of the stylus system. Thanks to its design, it optimally absorbs the measuring force that is introduced via the shaft. In addition, the connection point to the extension is always undercut to ensure optimum frictional connection. The resulting increased rigidity of the ZEISS M3 XXT stylus leads to less scatter in the stylus determination.



For optimum frictional connection, the connection points must always be clean when setting up your stylus systems.

### Comparison of the ZEISS M3 XXT Stylus and a M3 Stylus (Touch-Trigger)



ZEISS M3 XXT

M3 (touch-trigger)



M3 (touch-trigger) and ZEISS M3 XXT systems cannot be combined due to their different design

- Diameter adapter (DG) M3 (touch-trigger): 4 mm
- Diameter adapter (DG) ZEISS M3 XXT: 5 mm

Weak interfaces and incorrect measurements would be the result.

## What Makes the ZEISS M3 XXT Stylus so Special?

As described above, the ZEISS M3 XXT stylus has a significantly higher overall rigidity compared to a standard M3 stylus. This rigidity is achieved by the 1 mm larger diameter of the ZEISS M3 XXT adapter base body – i.e. the larger contact surface – and the titanium alloy used. Without an appropriate adapter, the use of a normal M3 styli in ZEISS M3 XXT systems is not recommended.

# Adapter Portfolio in the ZEISS Metrology Shop



**ZEISS M2:** Styli with M2 thread are particularly suitable for touch-trigger probes. With the appropriate connecting element, they can also be connected to other thread systems.



**M3 (touch-trigger):** Styli with M3 thread are particularly suitable for ZEISS RST measuring heads. With the appropriate connecting element, they can also be connected to other thread systems.



**ZEISS M3 XXXT:** Styli with M3 XXXT thread have been specially developed for ZEISS VAST XXXT measuring heads. Based on an M3 thread, these adapters feature an enlarged adapter diameter of 5mm.

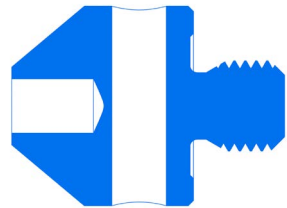


**ZEISS M4:** M4 Styli are mainly used for measuring units in machine tools. With the appropriate connecting element, they can also be fitted to other threaded systems.



**ZEISS M5:** Styli with M5 thread are the ideal choice for the ZEISS VAST probe system. With the appropriate connecting element, they can also be connected to other thread systems.

## ZEISS M5 stylus - adapter with undercut



**ZEISS Original Accessories  
are available in the  
ZEISS Metrology Shop.**

### Carl Zeiss

Industrielle Messtechnik GmbH

Carl Zeiss Straße 22

73446 Oberkochen / Germany

Email: [accessories.metrology.de@zeiss.com](mailto:accessories.metrology.de@zeiss.com)

Internet: [probes.zeiss.com](http://probes.zeiss.com)

