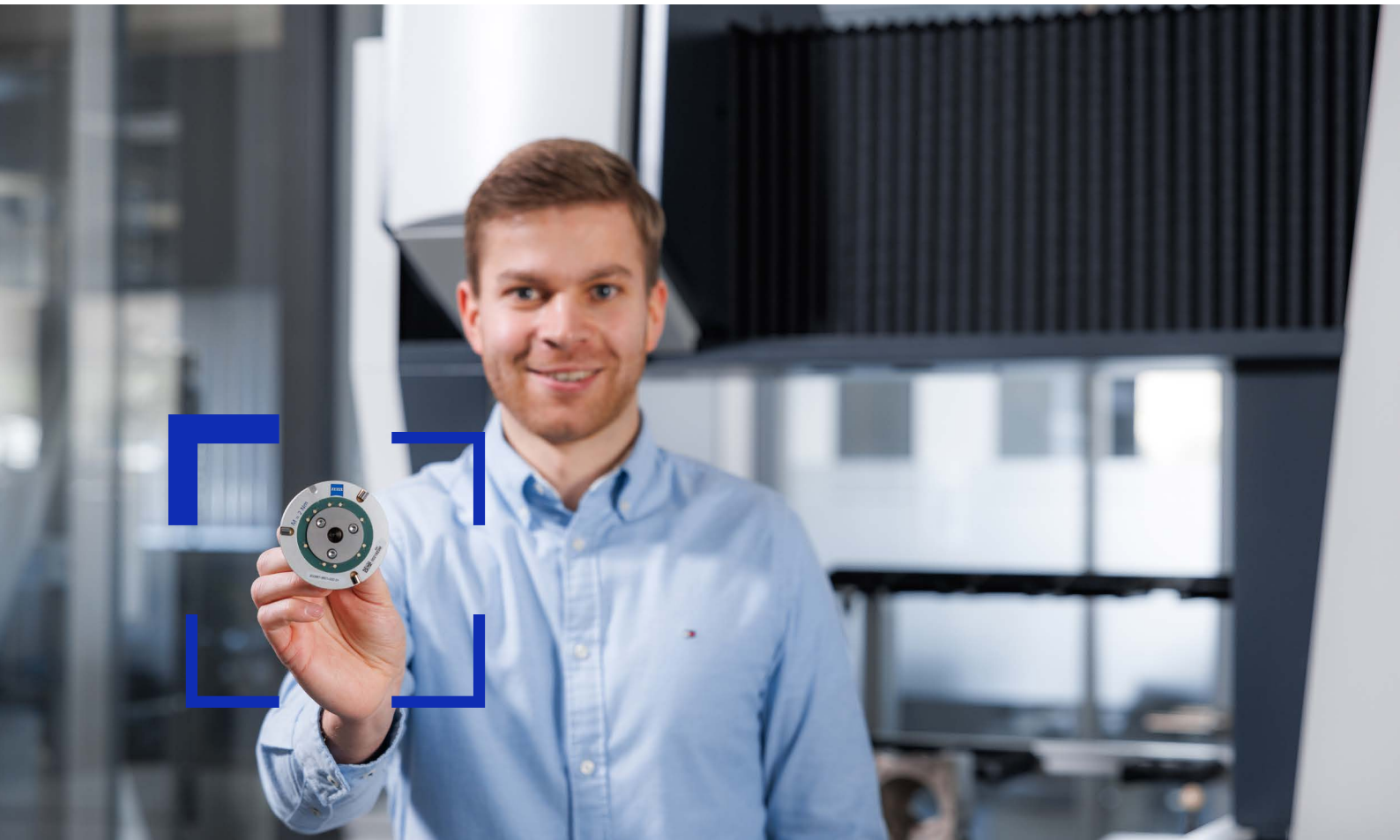




Seeing beyond

ZEISS Metrology Expert Tip



**Regular Check
of ZEISS Adapter Plates**

Regular Check

A CMM from ZEISS is a high-precision system. All components are optimally designed to fit and work together. The adapter plate is an essential interface in your measuring setup as it connects the stylus system to your probe. To ensure your CMM selects the right adapter plate for each workpiece, original ZEISS Adapter Plates are equipped with an ID chip that is recognized by your CMM.

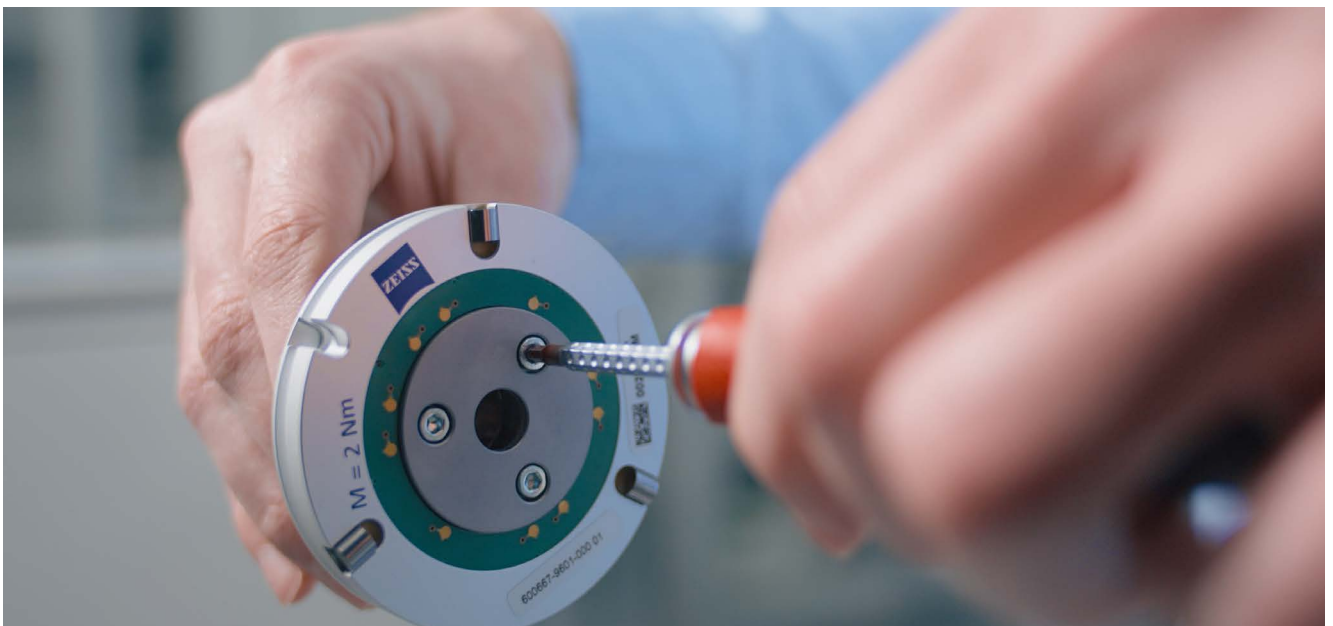
Only certified ZEISS Adapter Plates unlock the full potential of your ZEISS CMM. Their high quality is monitored according to strict test standards to deliver improved quality of measurement results, higher productivity and increased system stability. With a ZEISS Adapter Plate reliable measuring is guaranteed.

Correctly adjust ZEISS VAST and ZEISS VAST XTR

The orientation of a stylus system with reference to the machine axes can be adjusted using the adapter plate. The rotational position of the adapter plate is adjusted via three screws on the top. ZEISS VAST needs to be tightened with a maximum torque of 2 Nm and the ZEISS VAST XTR with 2.5 Nm. Tightening torque for the Adapter Plates is very critical and must be maintained. If the screws are tightened with less torque, there is a risk of the stylus system becoming angled, which may result in measuring errors due to shaft probing. If the screws are tightened too much, the aluminum body of the adapter plate will be distorted and can no longer be picked up by the head properly and the measured values cannot be reproducibly transferred.



To ensure correct tightening torque, it is best to tighten the screws with a torque wrench.



Cleaning

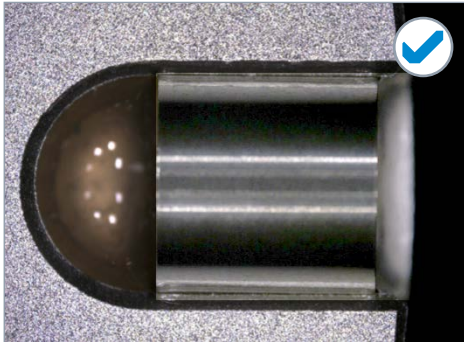
Regardless of the probe used, adapter plates are one of the most important components in the stylus system chain. The plate transfers the probing deflection to the probe. The better and more stable this connection is, the more reliable the measurable values that can be achieved. This transfer may be restricted if the plates are contaminated or damaged. We recommend regular cleaning and checking of the critical components under the microscope. The critical components are the three glued-in rollers and the anchor plate in the center of the plate. Both should be completely free from contamination and damage.



Appropriate cleaning cloths can be used for cleaning. Other cleaning agents may also be used depending on the type and level contamination.

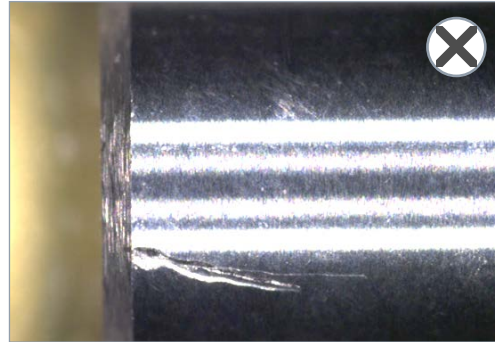
Illustration of rollers under a microscope

ZEISS Adapter Plate

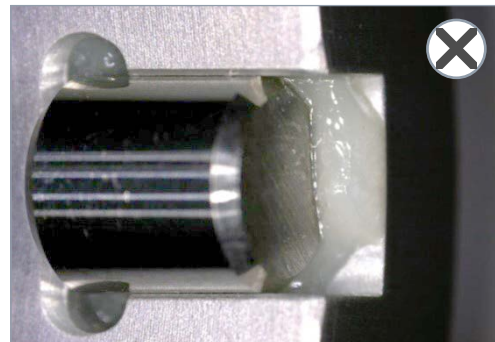


Quality checks at ZEISS ensure that only adapter plates with flawless rollers are shipped.

Competitor adapter plate



A roller with damage.



A worse glued roller.

**ZEISS Original Accessories
are available in the
ZEISS Metrology Shop.**

Carl Zeiss

Industrielle Messtechnik GmbH

Carl Zeiss Straße 22

73446 Oberkochen / Germany

Email: accessories.metrology.de@zeiss.com

Internet: probes.zeiss.com

